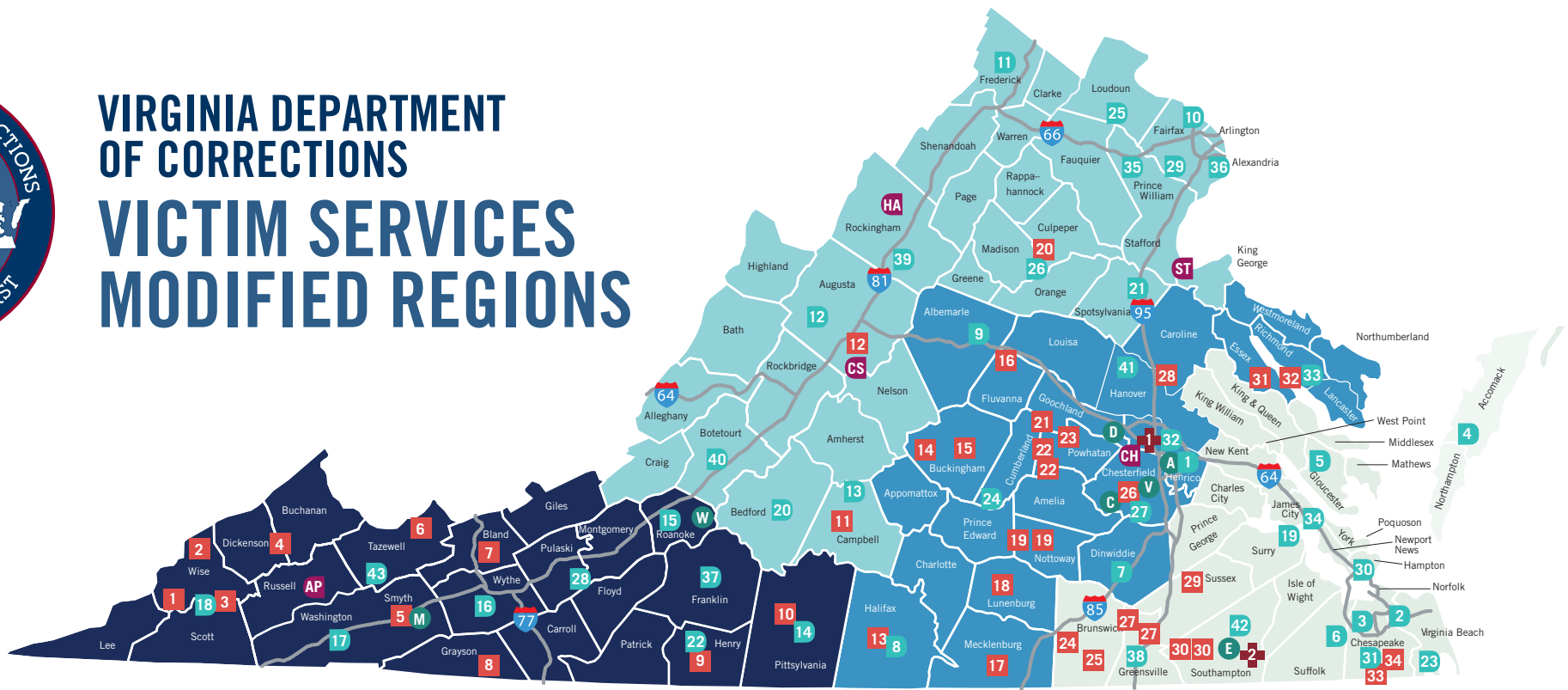




VIRGINIA DEPARTMENT
OF CORRECTIONS
VICTIM SERVICES
MODIFIED REGIONS



MODIFIED SOUTHWESTERN REGION

MODIFIED NORTHWESTERN REGION

MODIFIED CENTRAL REGION

MODIFIED EASTERN REGION

MAP LEGEND

FACILITIES

SECURE MEDICAL FACILITIES

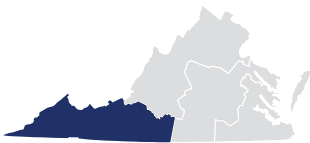
PROBATION & PAROLE DISTRICTS

COMMUNITY FACILITIES

ADMINISTRATIVE OFFICES

MAJOR HIGHWAYS

MODIFIED SOUTHWESTERN REGION



FACILITIES

- 7 Bland Correctional Center
- 10 Green Rock Correctional Center
- 4 Keen Mountain Correctional Center

- 5 Marion Correctional Treatment Center
- 9 Patrick Henry Correctional Unit
- 6 Pocahontas State Correctional Center
- 2 Red Onion State Prison
- 8 River North Correctional Center

P&P DISTRICTS

- 14 Danville
- 15 Roanoke
- 16 Wytheville Additional Offices in Carroll, Giles, Bland, Grayson City, Galax
- 17 Abingdon

- 1 Wallens Ridge State Prison
- 3 Wise Correctional Unit

- 18 Norton Additional Offices in Jonesville, Gate City, Clintwood
- 22 Martinsville
- 28 Radford
- 37 Rocky Mount
- 43 Tazewell Additional Office in Buchanan

COMMUNITY FACILITIES

- AP Appalachian Men's Community Corrections Alternative Program

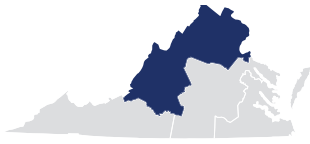
ADMINISTRATIVE OFFICES

- M Academy for Staff Development - Marion
- W Western Regional Office

REGIONAL VICTIM ADVOCATE

Beth Couch
Victim Advocate
(804) 836-2572

MODIFIED NORTHWESTERN REGION



FACILITIES

- 22 Coffeewood Correctional Center
- 12 Cold Springs Correctional Unit

P&P DISTRICT

- 10 Arlington
- 11 Winchester Additional Offices in Front Royal, Woodstock

- 12 Staunton Additional Office in Lexington
- 13 Lynchburg
- 20 Bedford
- 21 Fredericksburg
- 25 Leesburg Additional Office in Warrenton
- 26 Culpeper
- 29 Fairfax Additional Office in Alexandria

- 35 Manassas
- 36 Alexandria
- 39 Harrisonburg Additional Office in Luray
- 40 Fincastle

COMMUNITY FACILITIES

- CS Cold Springs Community Corrections Alternative Program
- HA Harrisonburg Men's Community Corrections Alternative Program
- ST Stafford Men's Community Corrections Alternative Program

REGIONAL VICTIM ADVOCATE

Cristianne Smith
Victim Advocate
(804) 221-2213

MODIFIED CENTRAL REGION



FACILITIES

- 17 Baskerville Correctional Center
- 20 Beaumont Correctional Center
- 14 Buckingham Correctional Center
- 28 Caroline Correctional Unit
- 26 Central Virginia Correctional Unit

- 15 Dillwyn Correctional Center
- 16 Fluvanna Correctional Center for Women
- 13 Halifax Correctional Unit
- 31 Haynesville Correctional Center
- 32 Haynesville Correctional Unit
- 18 Lunenburg Correctional Center
- 19 Nottoway Correctional Center
- 19 Nottoway Work Center

P&P DISTRICTS

- 1 Richmond
- 7 Petersburg
- 8 South Boston

- 23 State Farm Correctional Center
- 24 State Farm Work Center
- 22 Virginia Correctional Center for Women

- 9 Charlottesville
- 24 Farmville
- 27 Chesterfield
- 32 Henrico
- 33 Warsaw
- 41 Ashland

COMMUNITY FACILITIES

- CH Chesterfield Women's Community Corrections Alternative Program

SECURE MEDICAL FACILITIES

- 1 Medical College of Virginia

ADMINISTRATIVE OFFICES

- A Atmore Headquarters
- C Central Regional Office
- D Academy for Staff Development – Crozier
- V Virginia Correctional Enterprises

REGIONAL VICTIM ADVOCATE

Cheryle Parrish
Victim Advocate
(804) 396-0708

MODIFIED EASTERN REGION



FACILITIES

- 30 Deerfield Correctional Center
- 30 Deerfield Men's Work Center
- 30 Deerfield Men's II Correctional Center
- 27 Greenville Correctional Center

- 27 Greenville Work Center
- 34 Indian Creek Correctional Center
- 25 Lawrenceville Correctional Center
- 34 St. Brides Correctional Center
- 29 Sussex I State Prison

P&P DISTRICTS

- 2 Norfolk
- 3 Portsmouth
- 4 Accomac
- 5 Gloucester
- 6 Suffolk
- 19 Newport News
- 23 Virginia Beach
- 30 Hampton

- 31 Chesapeake
- 34 Williamsburg
- 38 Emporia
- 42 Franklin

COMMUNITY FACILITIES

- BR Brunswick Community Corrections Alternative Program

SECURE MEDICAL FACILITIES

- 2 Southampton Memorial Hospital

ADMINISTRATIVE OFFICES

- D Academy for Staff Development – Capron
- E Eastern Regional Office

REGIONAL VICTIM ADVOCATE

Cheryl Moody
Victim Advocate
(804) 396-0688